

PUMP SPECIFICATIONS

Click Here to visit our homepage: www.powerzoneequipment.com

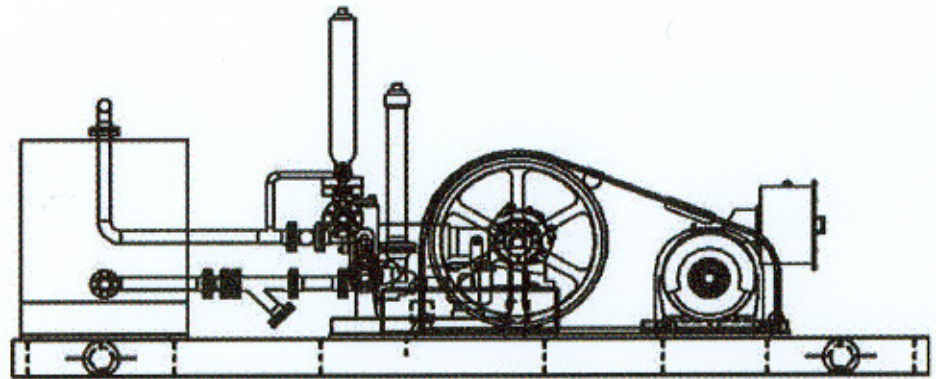
We can provide you with hundreds of authentic reciprocating and centrifugal diagrams and performance charts from the early 1940's to the present time. We can also use our own "Spec/Performance Chart" to determine the best pump for your particular application.

Contact us with your pumping conditions and requirements, and our professionals here will find the best pump and accessories for you.

SEE SAMPLE SPEC/PERFORMANCE CHART BELOW

POWER ZONE EQUIPMENT, INC.

46920 COUNTY ROAD E
CENTER, CO 81125



FOR MORE INFORMATION PLEASE CALL 719-754-1981

Manufacturer:

Oilwell

Model:

B-558

HP	Max PSI	Stroke	Cyls.	Weight	Rod Load	MinPlunger	Pl.Increment	MaxPlunger	Suction	Discharge
630	1765	8	5	16260	25000	4.25	0.25	5.5	8"ANSI 300FF	4"ANSI 900LR

Pumping capacity in Gallons per Minute:

Speed Increment: 50

Plunger dia	Area	Max PSI	Gal/Rev	Speed : RPM				min speed	max speed
				100	150	200	225		
4.25	14.188	1762	2.4568	245.68	368.52	491.36	552.78	100	225
4.5	15.906	1572	2.7544	275.44	413.15	550.87	619.73		
4.75	17.723	1411	3.0689	306.89	460.33	613.78	690.50		
5	19.638	1273	3.4004	340.04	510.06	680.09	765.10		
5.25	21.650	1155	3.7490	374.90	562.35	749.80	843.52		
5.5	23.761	1052	4.1145	411.45	617.18	822.90	925.77		

Customers Pumping Requirement:

Volume: **800** GPM Requires 194 RPM with **5.5**" Plungers
 Pressure: **700** PSI

Engine/Motor Speed: **1180** Drive Ratio Req'd **6.07**

Gear Ratio (if applicable) **1**

Horsepower Required: **363** Overall Utilization: **58%**